

EXISTING SUPERSTRUCTURE—Twelve log stringers with 3' planking in very good condition.

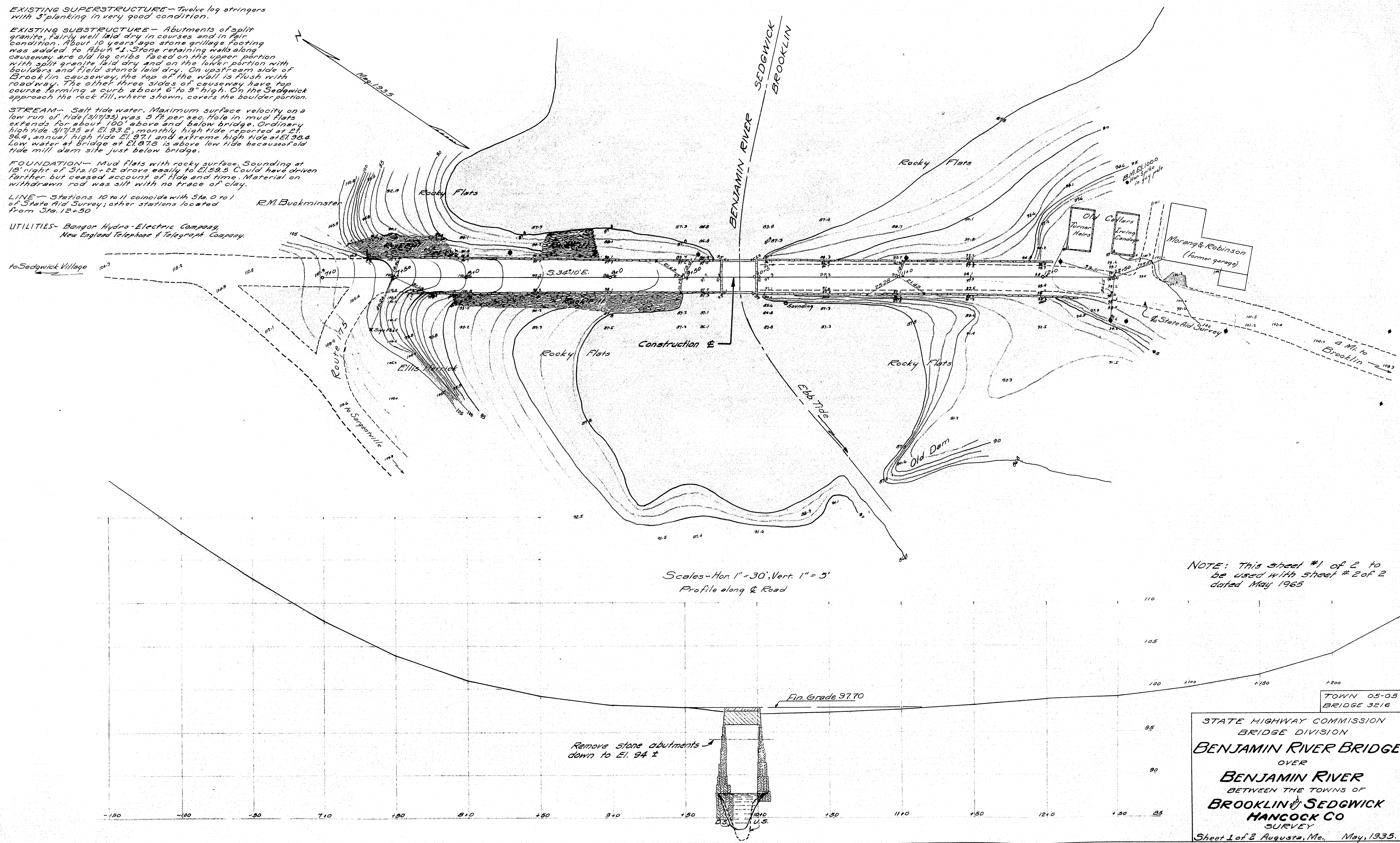
EXISTING SUBSTRUCTURE—Abutments of split granite, fairly well laid dry in courses and in fair condition. About 10 years ago stone grillage footing was added to Abut. 1. Stone retaining walls along causeway are old log cribs faced on the upper portion with split granite laid dry and on the lower portion with boulders and field stones laid dry. On upstream side of Brookline causeway, the top of the wall is flush with roadway. The other three sides of causeway have top course forming a curb about 6" to 9" high. On the Sedgwick approach the rock fill, where shown, covers the boulder portion.

STREAM—Salt tide water. Maximum surface velocity on a low run of tide (5/17/35) was 5 ft. per sec. Hole in mud flats extends for about 100' above and below bridge. Ordinary high tide 5/17/35 at El. 93.6, monthly high tide reported at El. 96.4, annual high tide El. 97.1 and extreme high tide at El. 98.8. Low water at bridge at El. 87.8 is above low tide because of old tide mill dam site just below bridge.

FOUNDATION—Mud flats with rocky surface. Sounding at 10' night of 5/12/35 drove easily to El. 59.5. Could have driven farther but ceased account of tide and time. Material on withdrawn rod was silt with no trace of clay.

LINE—Stations 10 to 11 coincide with Sta. 0 to 1 of State Aid Survey; other stations located from Sta. 12+50.

UTILITIES—Bangor Hydro-Electric Company, New England Telephone & Telegraph Company.



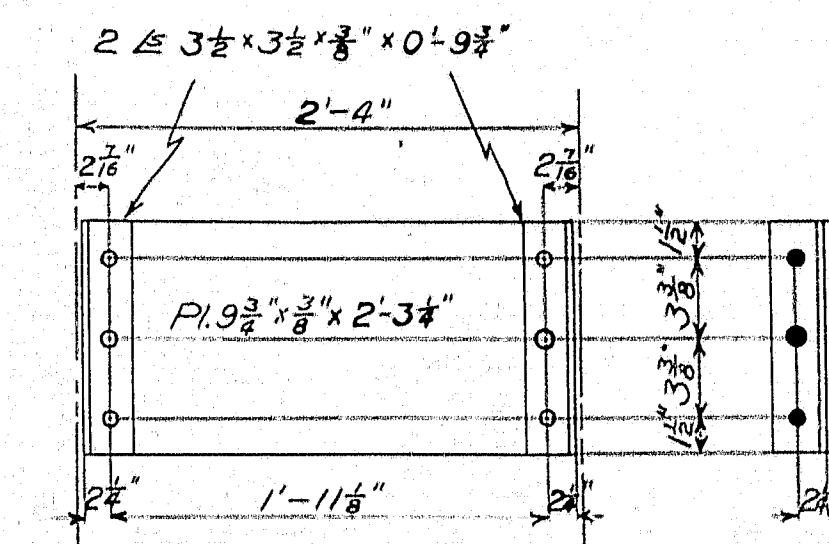
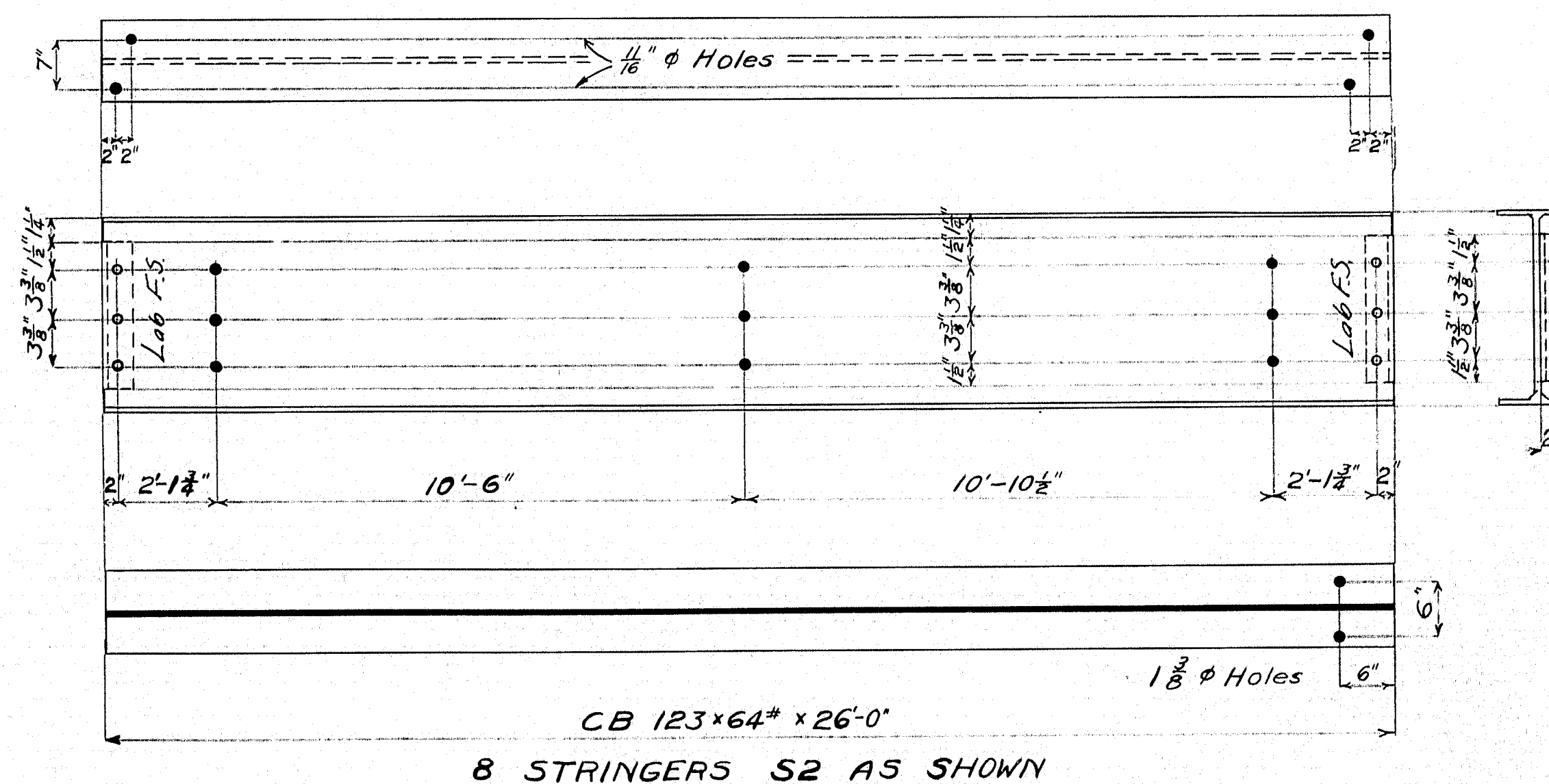
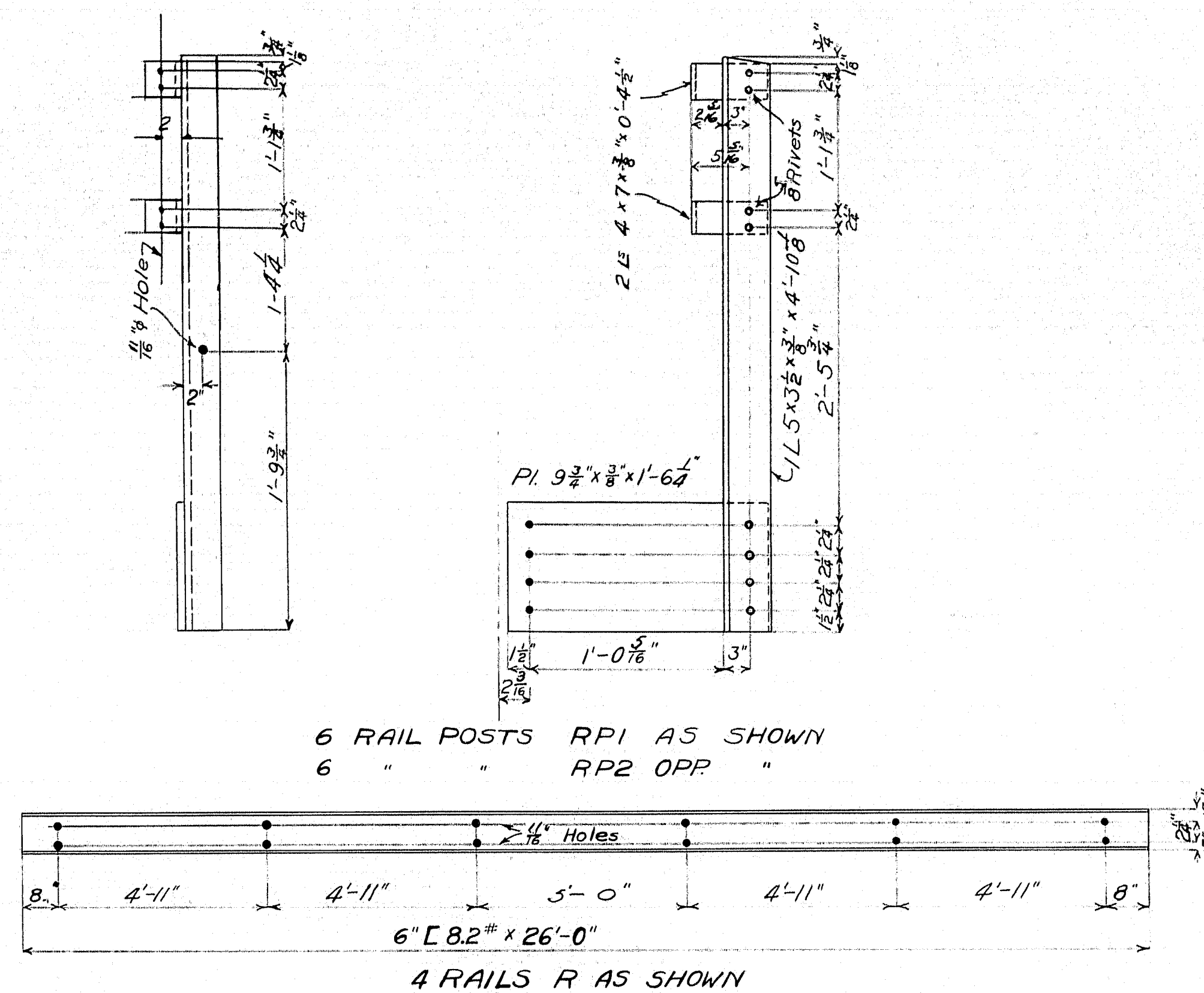
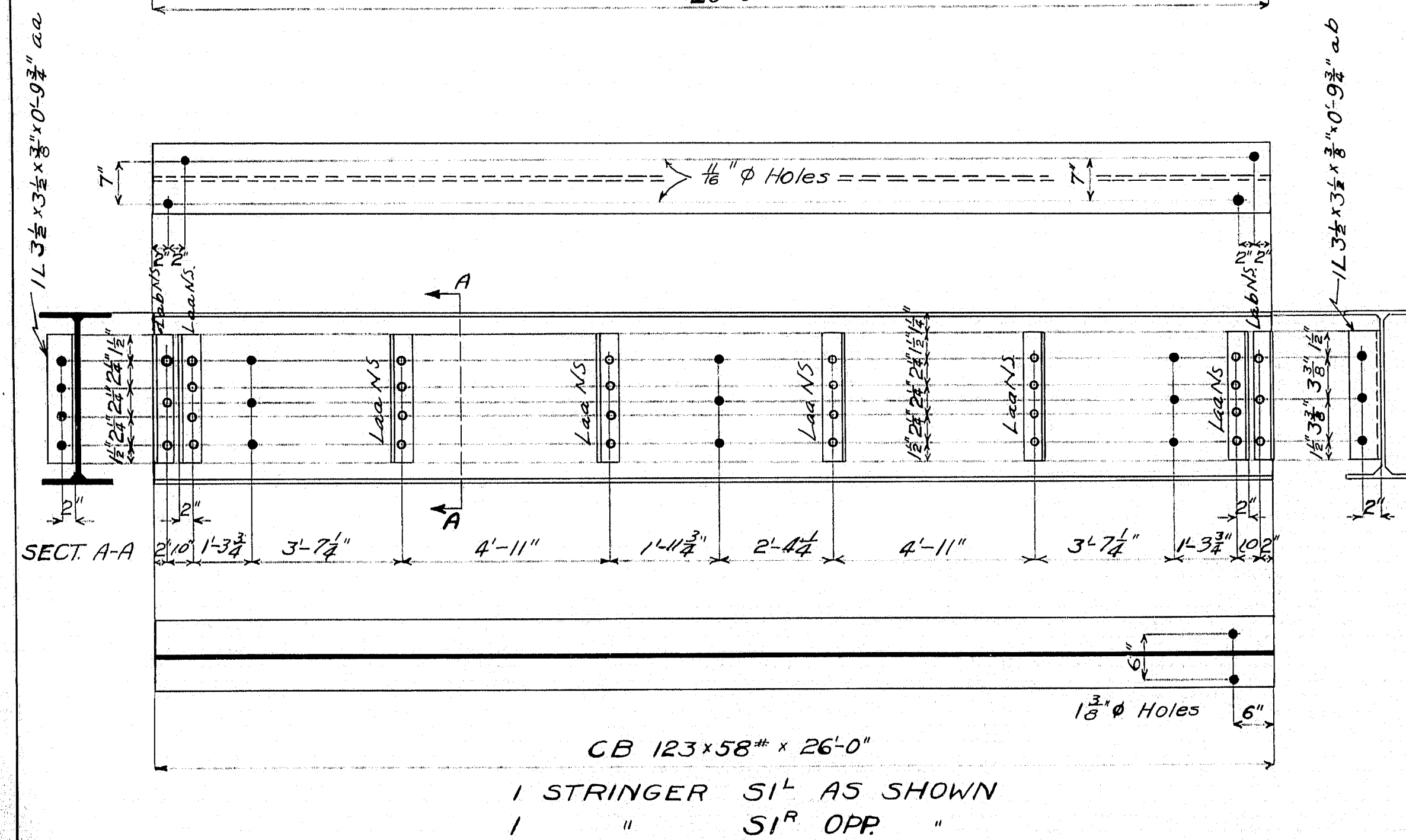
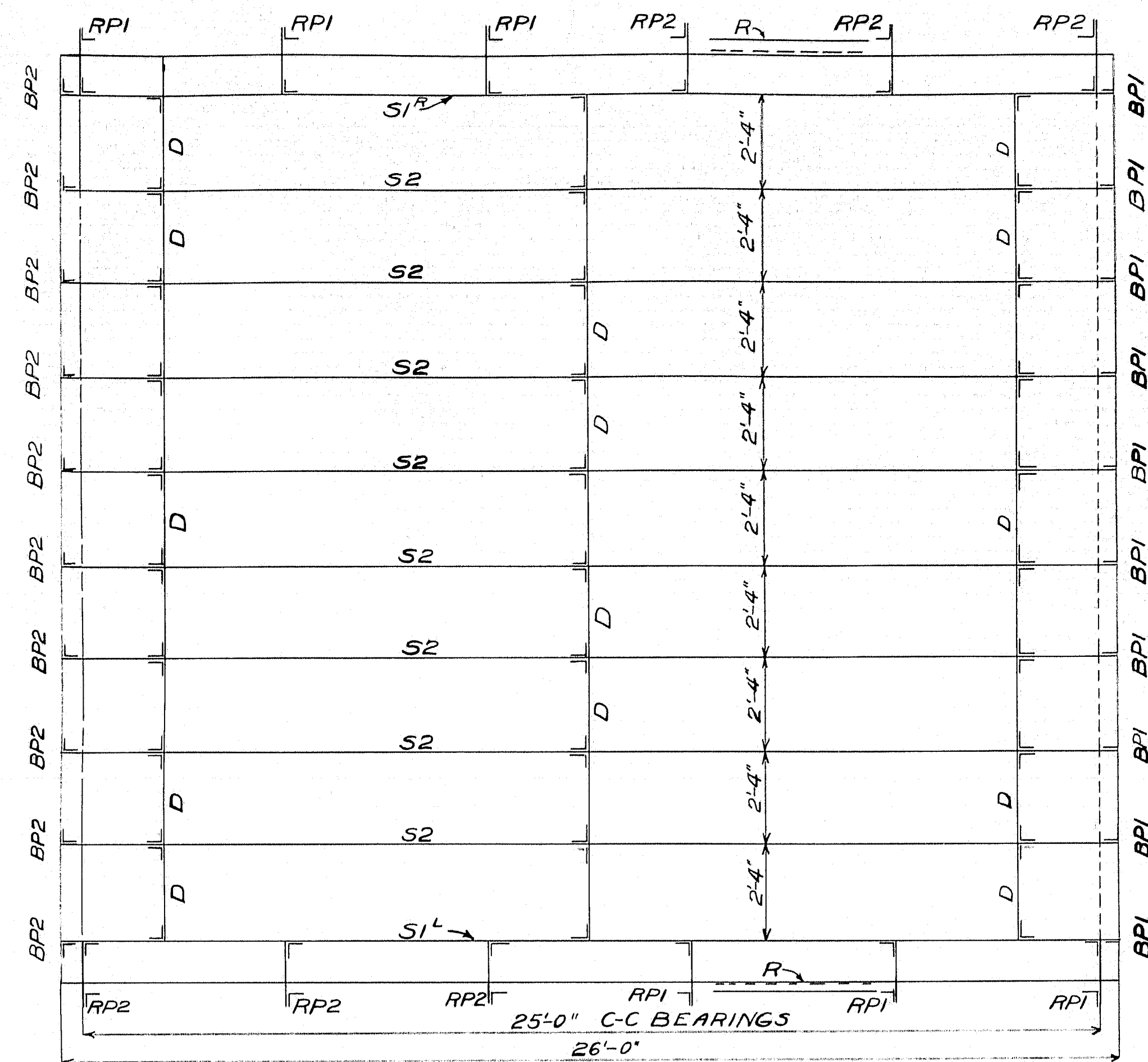
NOTE: This sheet #1 of 2 to be used with sheet #2 of 2 dated May 1965

TOWN 05-03  
BRIDGE 3216  
STATE HIGHWAY COMMISSION  
BRIDGE DIVISION  
**BENJAMIN RIVER BRIDGE**  
OVER  
**BENJAMIN RIVER**  
BETWEEN THE TOWNS OF  
**BROOKLINE & SEDGWICK**  
**HANCOCK CO**  
SURVEY  
Sheet 1 of 2 August, Me., May, 1935.

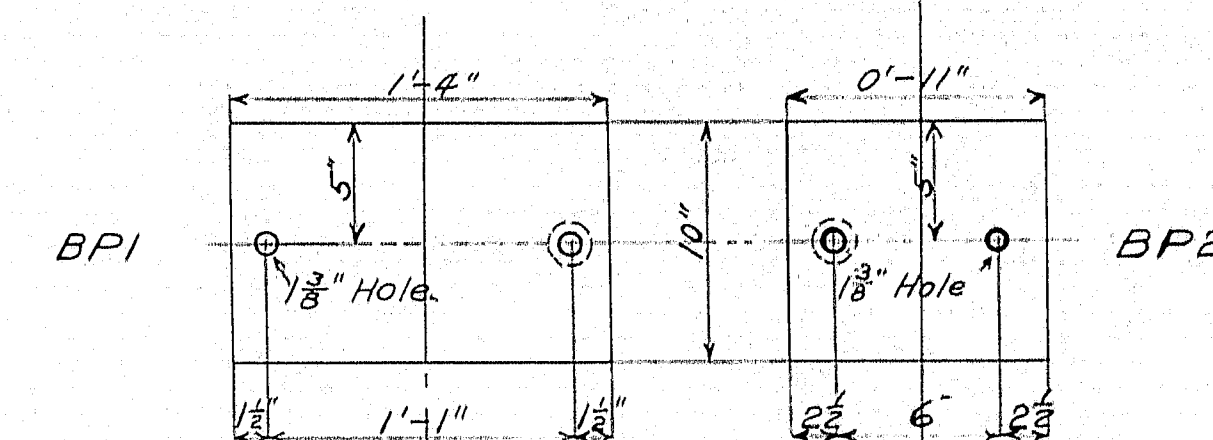
19-115

0 1 2 3 4 5 INCHES

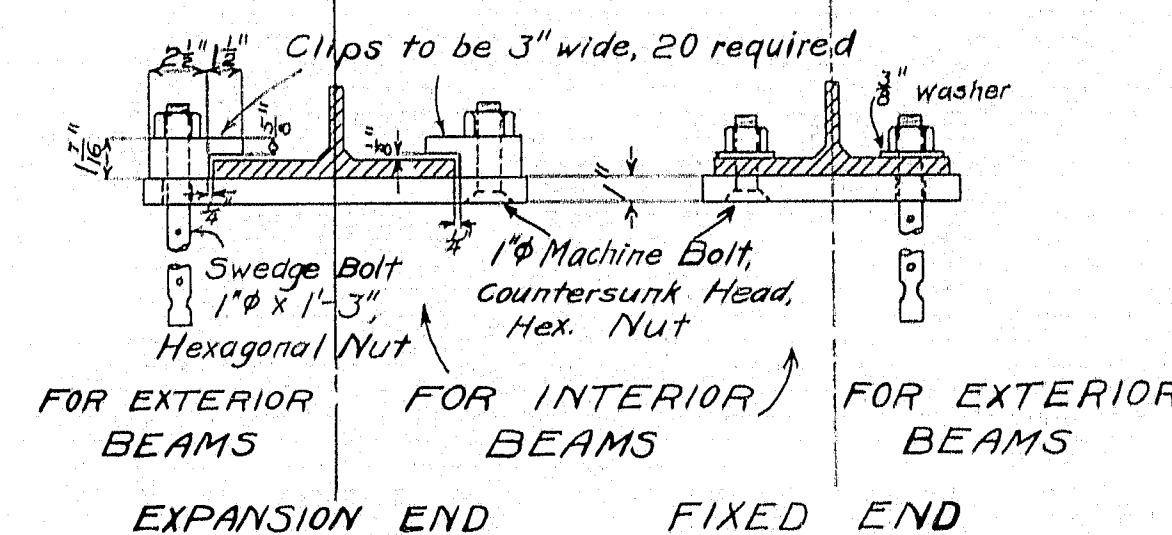




27 DIAPHRAGMS D AS SHOWN



10 BEARING PLATES BPI,  
10 " " BP2,



BEARING DETAILS

All shop work to be riveted  
All rivets to be 3/4" unless otherwise indicated  
All holes to be 1/8" unless " "  
All field connections to be bolted  
138 bolts 3/4" x 2", Hex. heads & nuts (U.S. or Am. Br. Co. Std.)

48 " 5/8" x 1 1/2" " " "  
8 sledge bolts 1" x 1-3" Hex. nuts  
32 machine bolts 1" x 3 1/2" with countersunk  
heads & hex. nuts.

Loading H15  
Double Live Load and Impact  
f<sub>s</sub> = 24,000 #/in.<sup>2</sup>

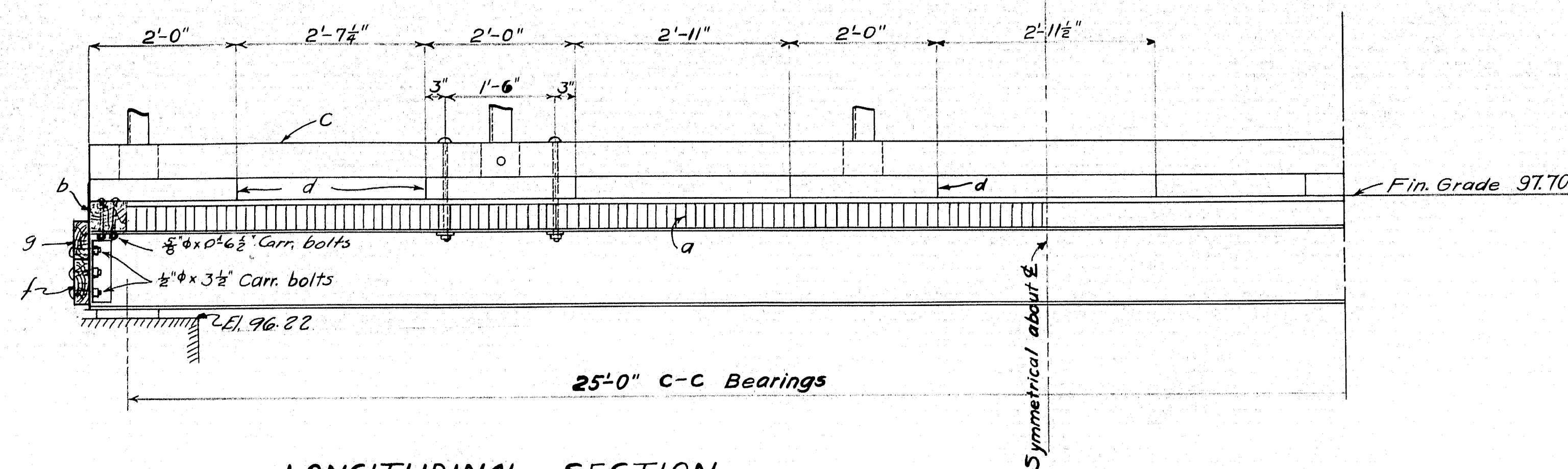
TOWN 05-05  
BRIDGE 3216

STATE HIGHWAY COMMISSION  
BRIDGE DIVISION  
**BENJAMIN RIVER  
BRIDGE**  
BETWEEN THE TOWNS OF  
**BROOKLIN & SEDGWICK**  
**HANCOCK COUNTY**  
STEEL DETAILS

Sheet 2 of 3 Augusta, Me., July, 1935

19-116





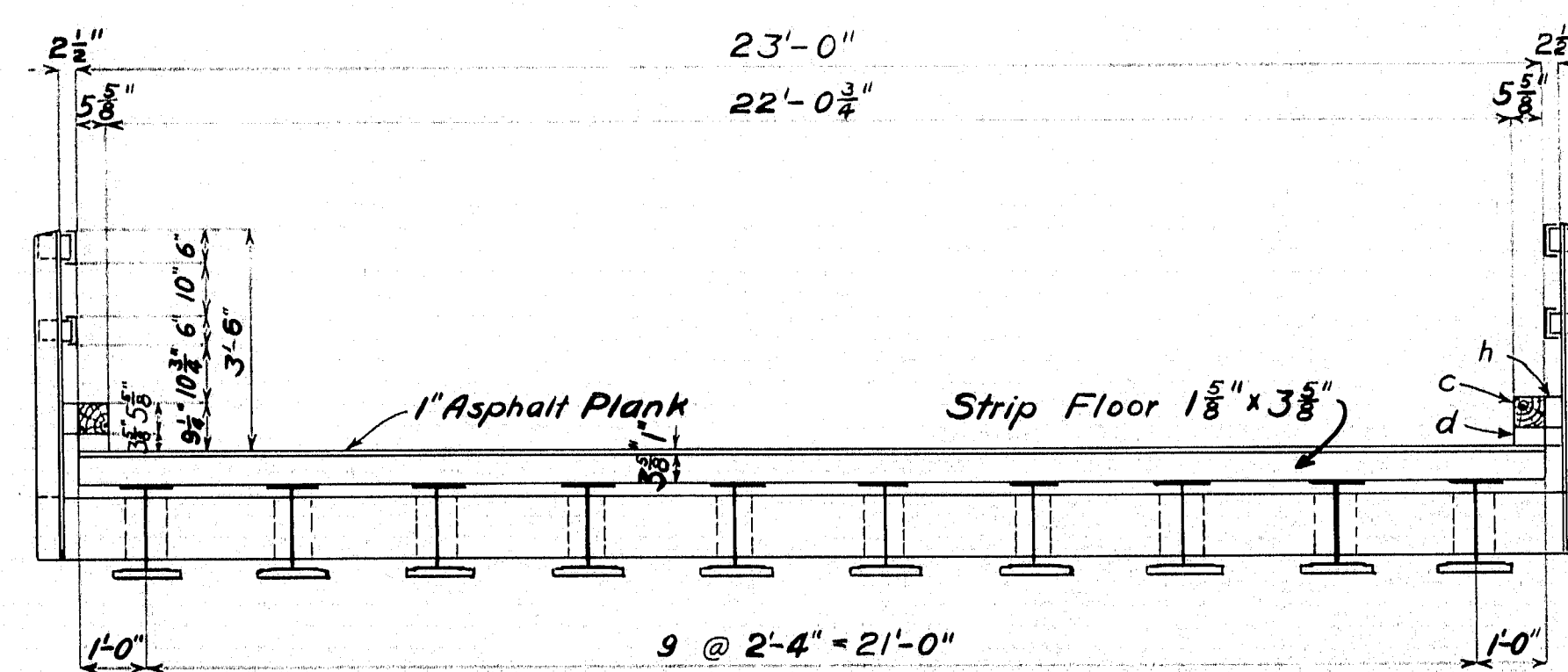
LONGITUDINAL SECTION

### TIMBER SCHEDULE

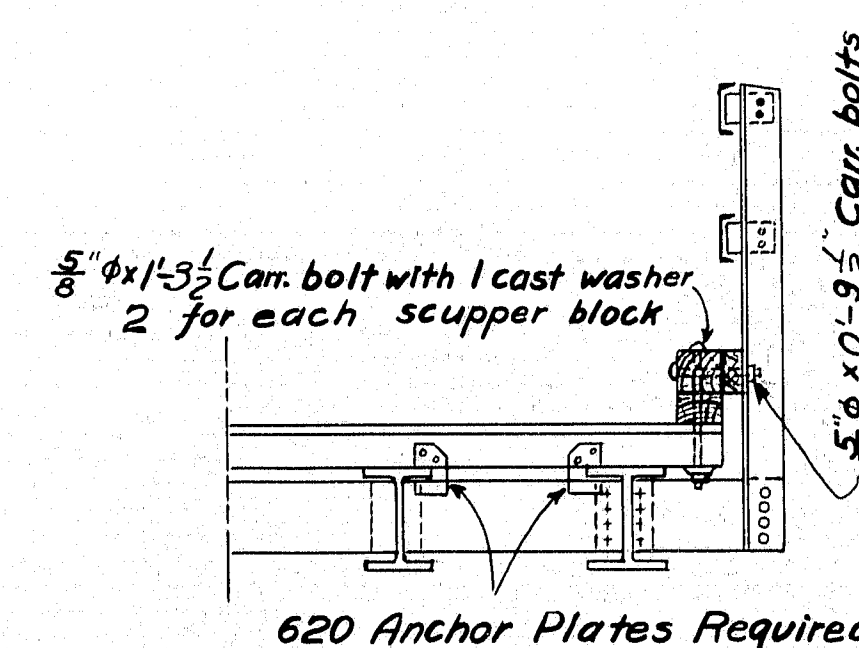
Mark	No. Req'd	Dress	Fin. Size	Length	Remarks
a	186	D45	1 1/8" x 3 5/8"	23'-0"	Laminated floor
b	2	D45	4 1/2" x 5 5/8"	23'-0"	End timbers
c	2	D45	5 5/8" x 5 5/8"	26'-0"	Curbs
d	12	D45	3 5/8" x 5 5/8"	2'-0"	Scupper blocks
e	20		3" x 6"	0'-10"	Spiking pos.
f	2		3" x 7"	24'-0"	End planking
g	2		3" x 8"	24'-0"	" "
h	12	D45	2 5/8" x 5 5/8"	0'-6"	Rail post blocks

### BOLT SCHEDULE

Size	No.	Kind	Length	No. Washers	Location
5/8" φ	40	Carriage	0'-6 1/2"		End timbers (floor)
5/8" φ	24	Carriage	1'-3 1/2"	24 Cast	Curbs
5/8" φ	12	"	0'-9 1/2"		Rail posts to curbs
1/2" φ	60	"	0'-3 1/2"		End Planking



TRANSVERSE SECTION



CURB DETAILS

SUBSTRUCTURE NOTE:- Shim up on present abutments with stone to obtain correct bridge seat elevation for stringers. Build up retaining walls on approaches with stone where necessary to retain fill on account of rise in roadway grade.

Designed by J.H.  
Checked by E.B.  
J.H. X E.B.

TOWN 05-05  
BRIDGE 3216

STATE HIGHWAY COMMISSION  
BRIDGE DIVISION  
**BENJAMIN RIVER  
BRIDGE**  
BETWEEN THE TOWNS OF  
**BROOKLIN & SEDGWICK**  
**HANCOCK COUNTY**  
BRIDGE DETAILS

Sheet 3 of 3 Augusta, Me. July, 1935

19-117